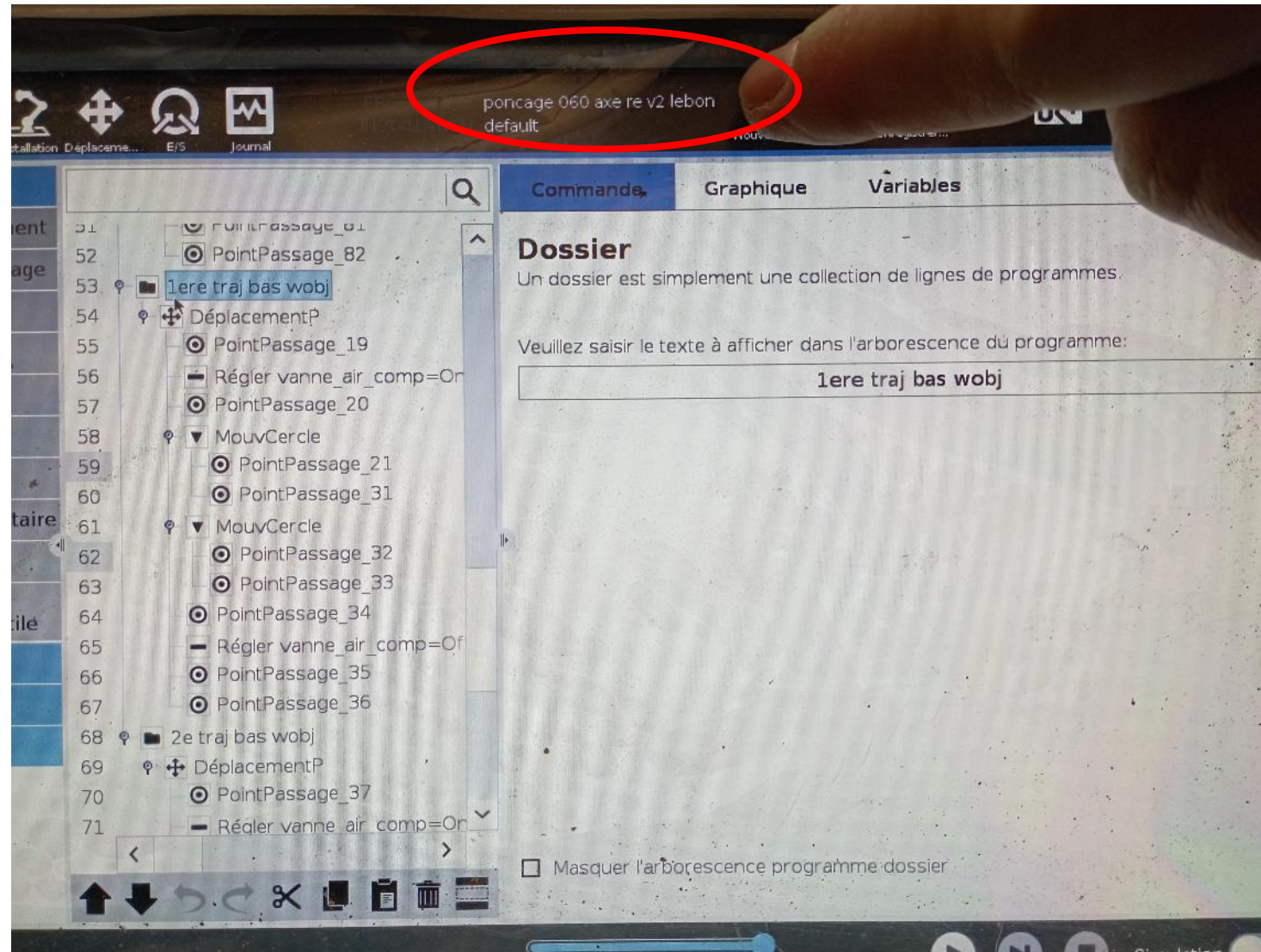
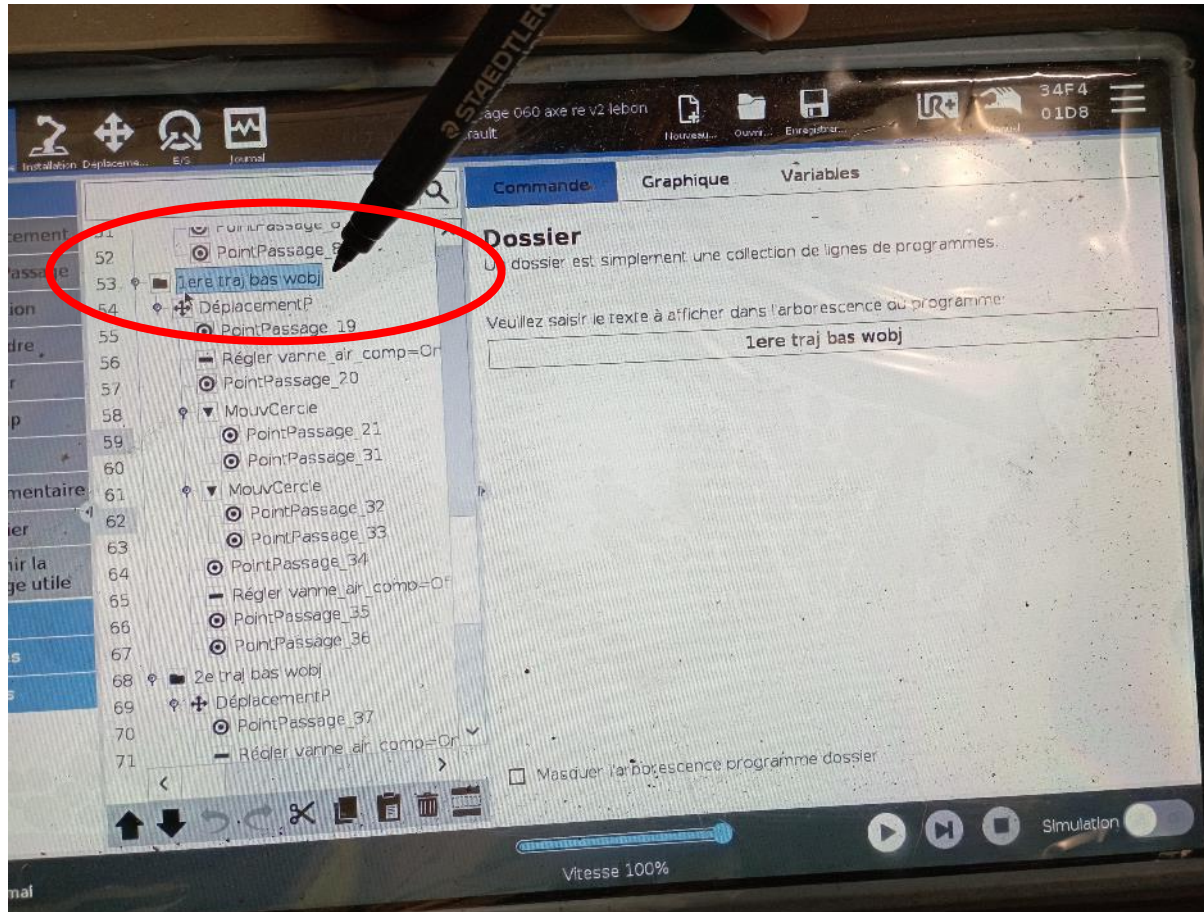
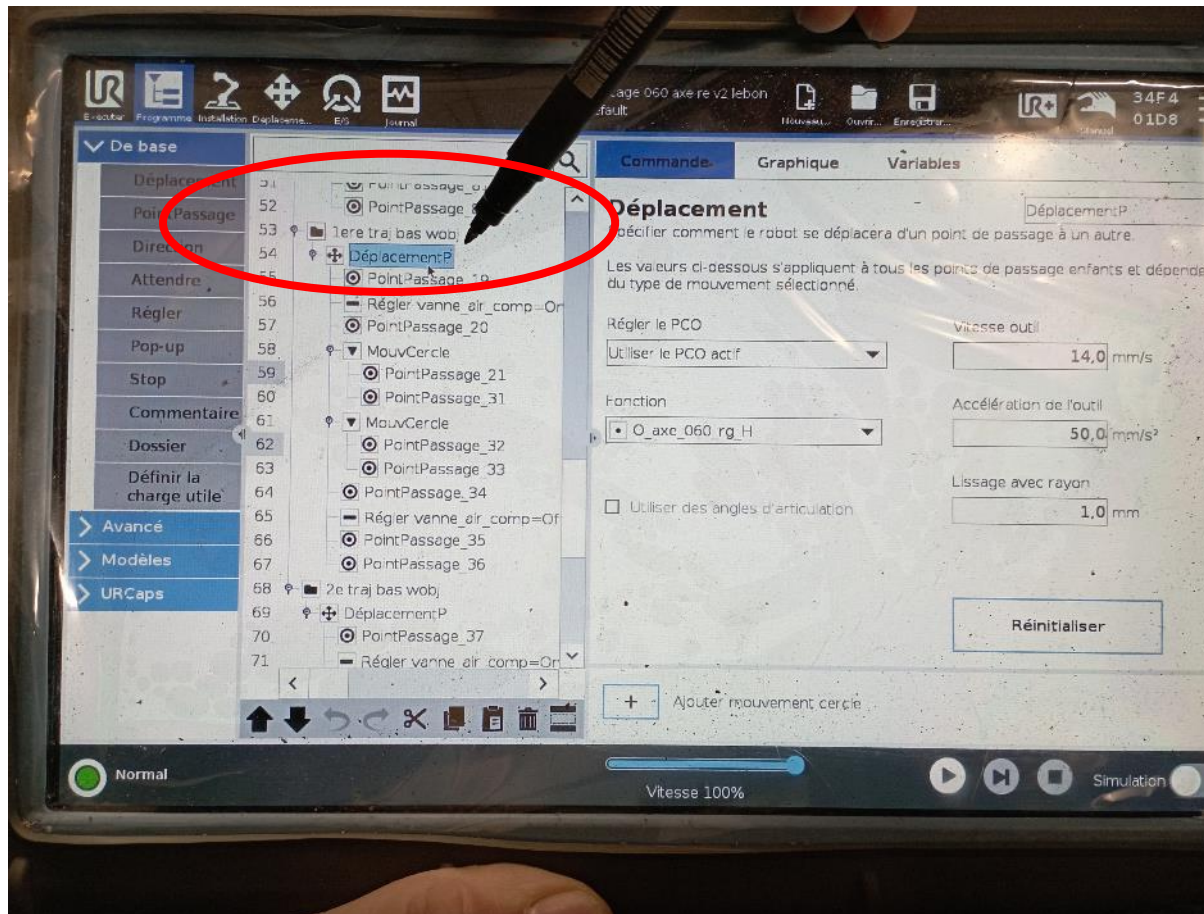


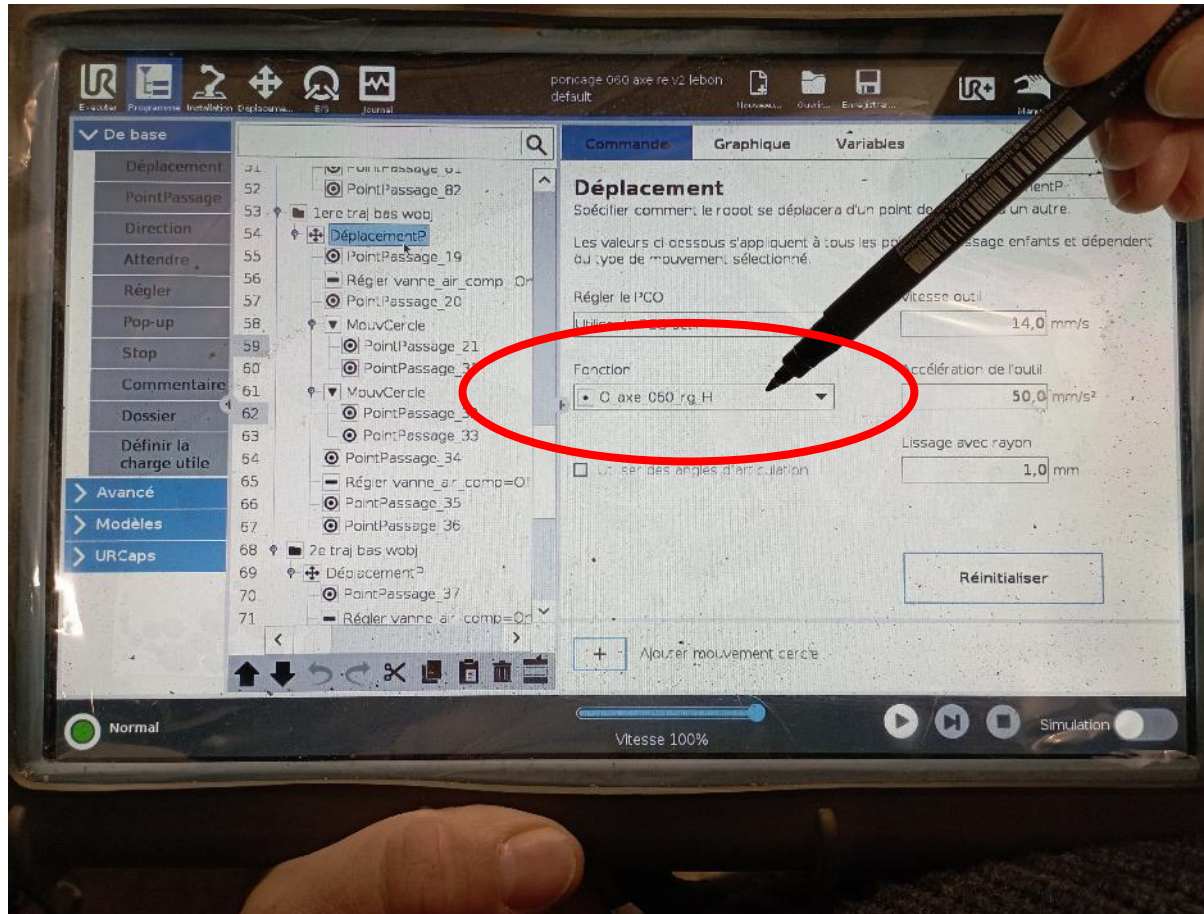
Save as is not working

Original program

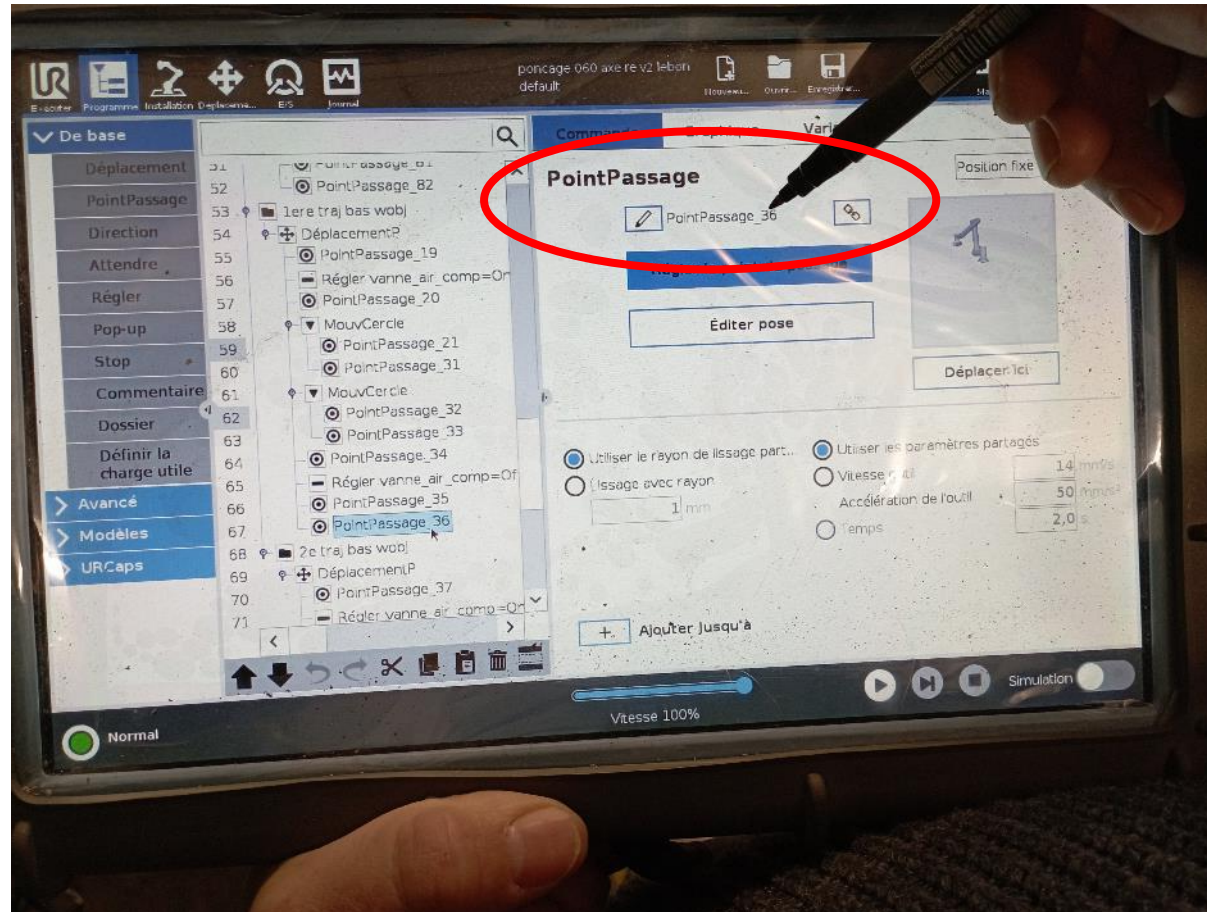








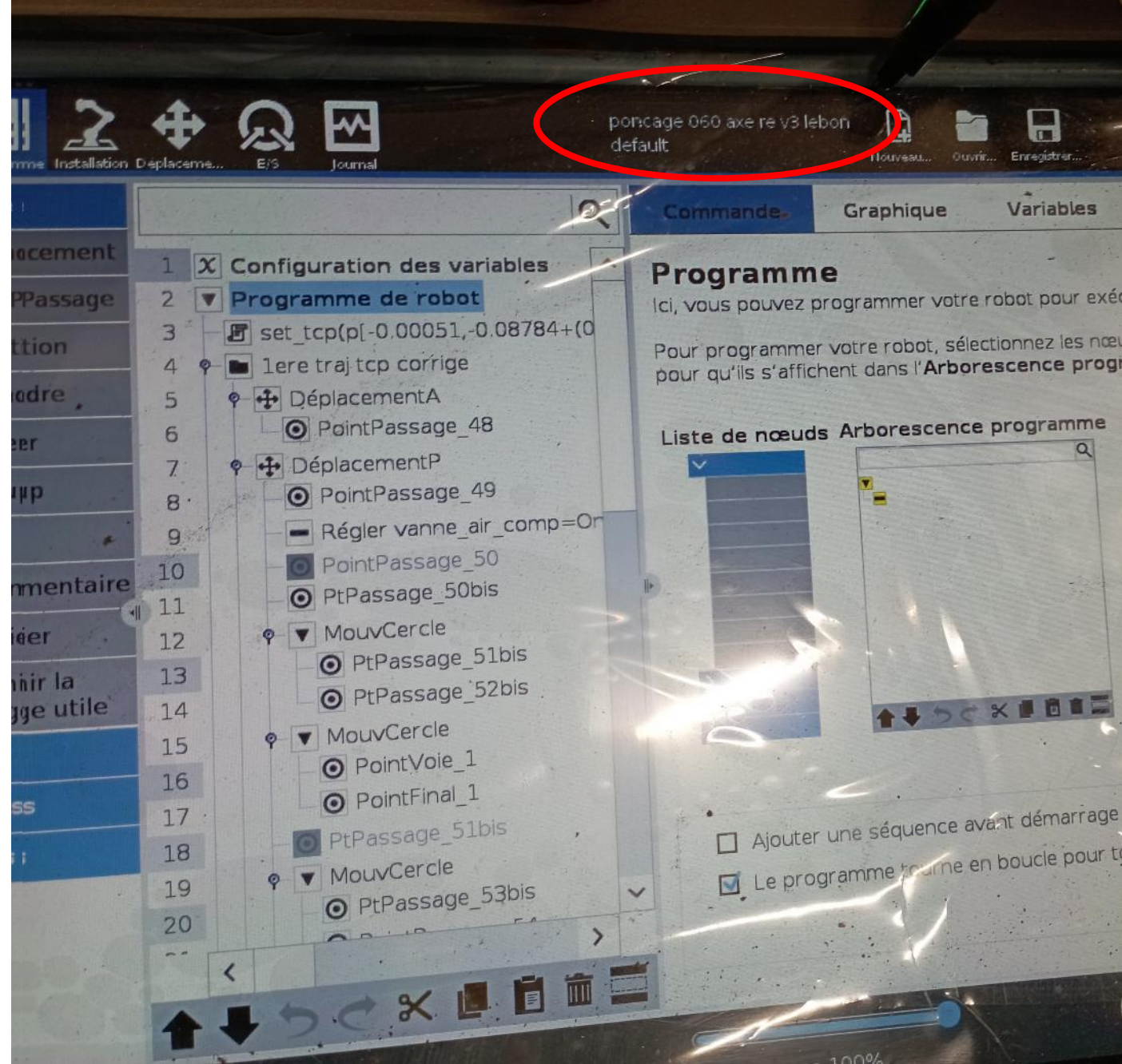
PointPassage_36

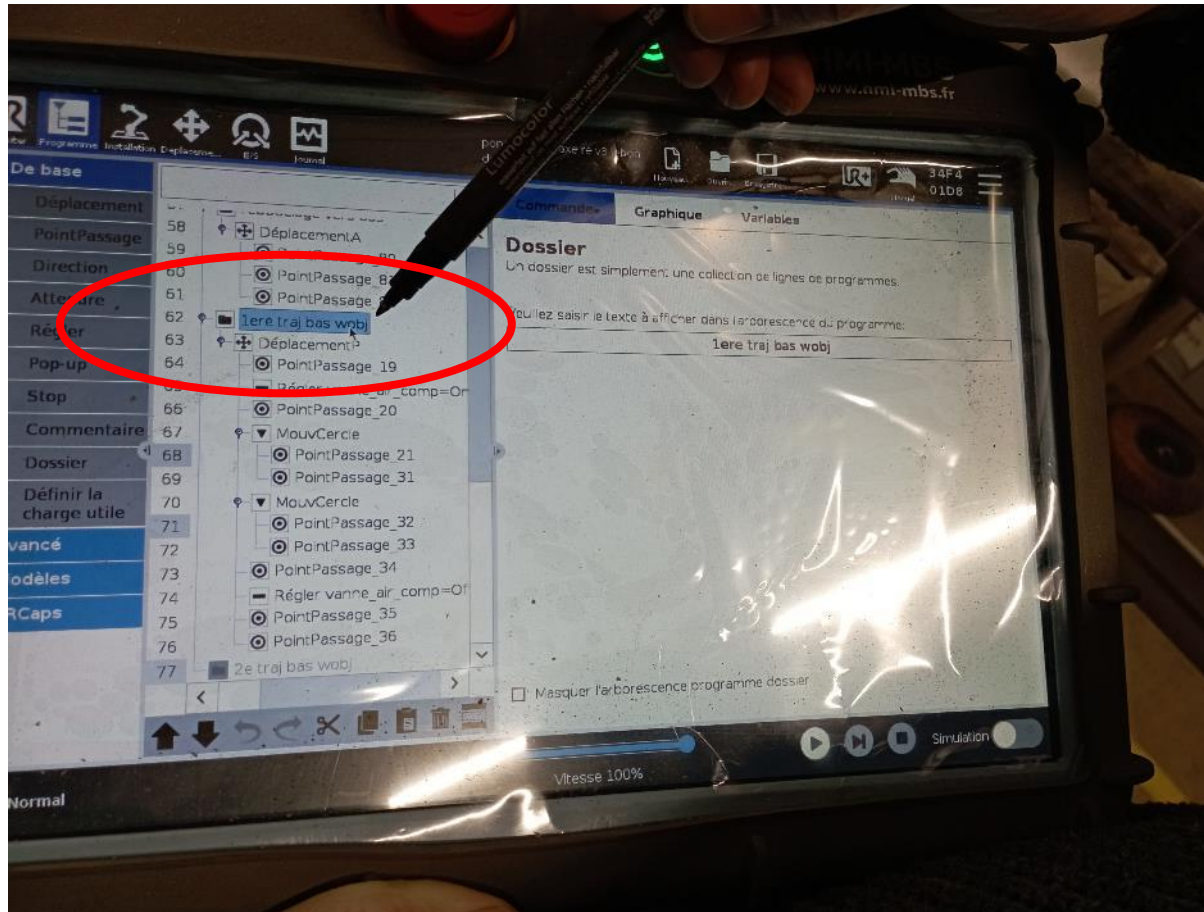


Point Passage_36 [function O_axe_060_rg_H]

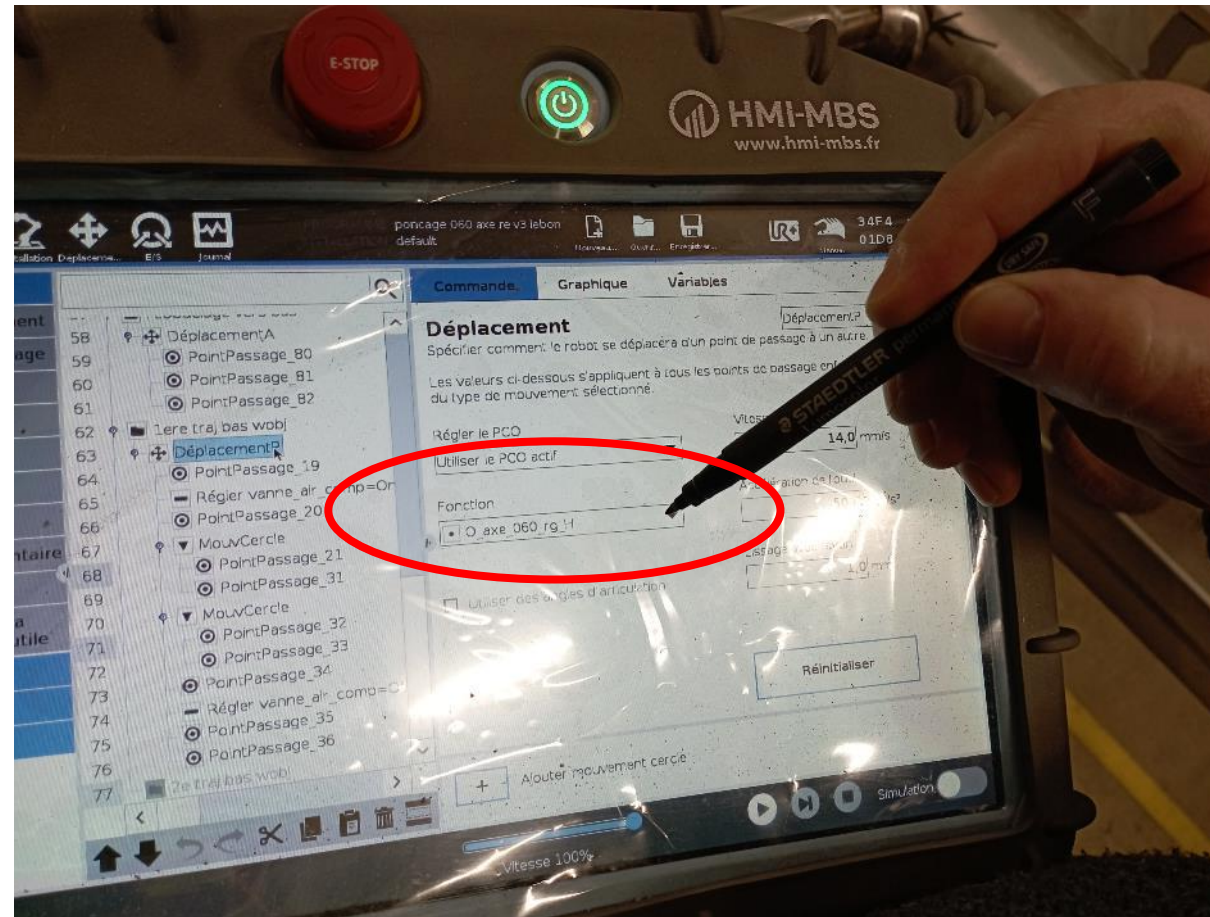


Program « Ponçage
060 axe re V2
lebon » has been
saved as « Ponçage
060 axe re V3
lebon »

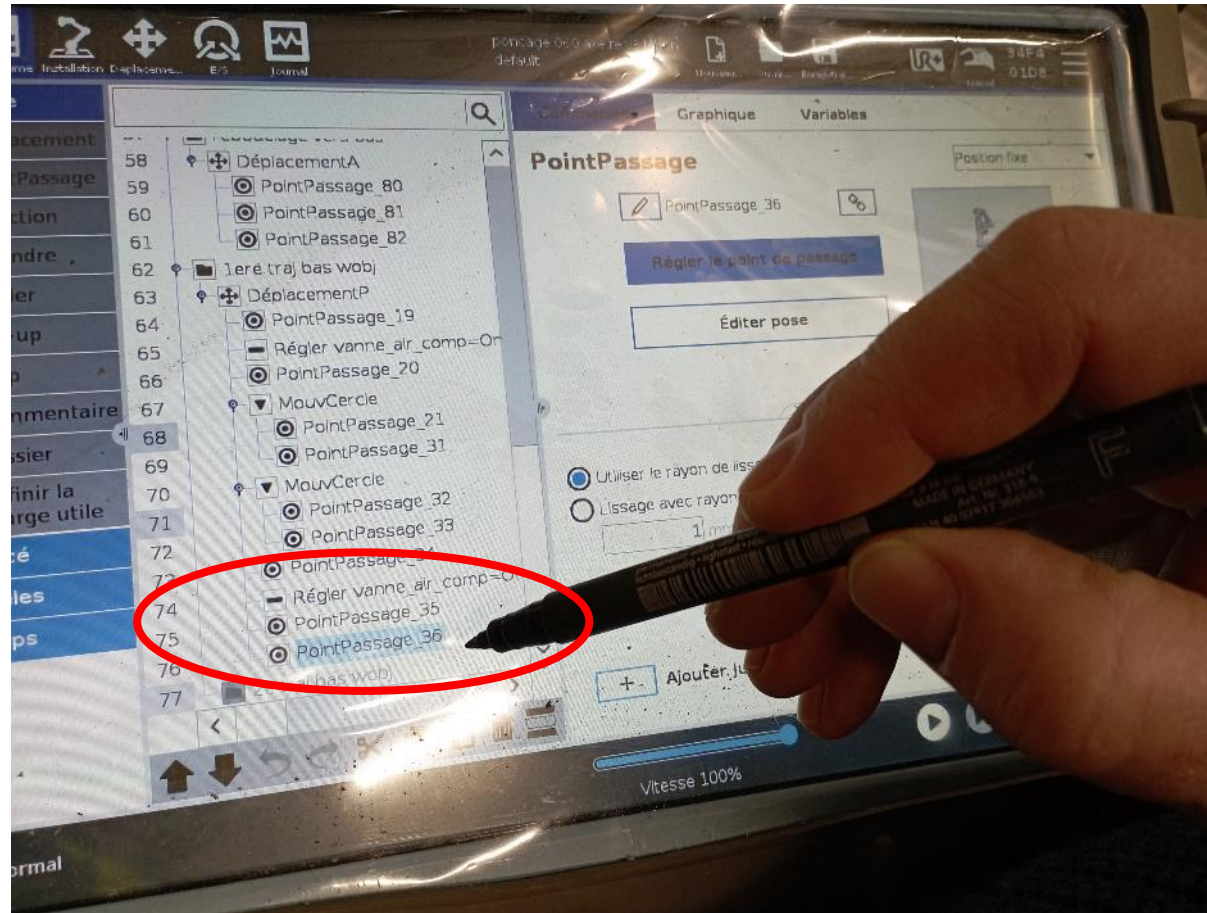




We take the same point, on the same displacement. No change has been made.



PointPassage_36



Point Passage_36 [function O_axe_060_rg_H]

Offset has
been created



The robot go an other point. It probably go to the same point, but in an other function. This problem occur with severals points of the displacement. Some point are still at the good place. There is no relative displacement



PointPassage_36 with « poncage
060 axe re V3 lebon »

PointPassage_36 with « poncage
060 axe re V2 lebon »

Program « poncage
060 axe V3 lebon »
has been upload on a
virtual polyscope.
Same error occur.

